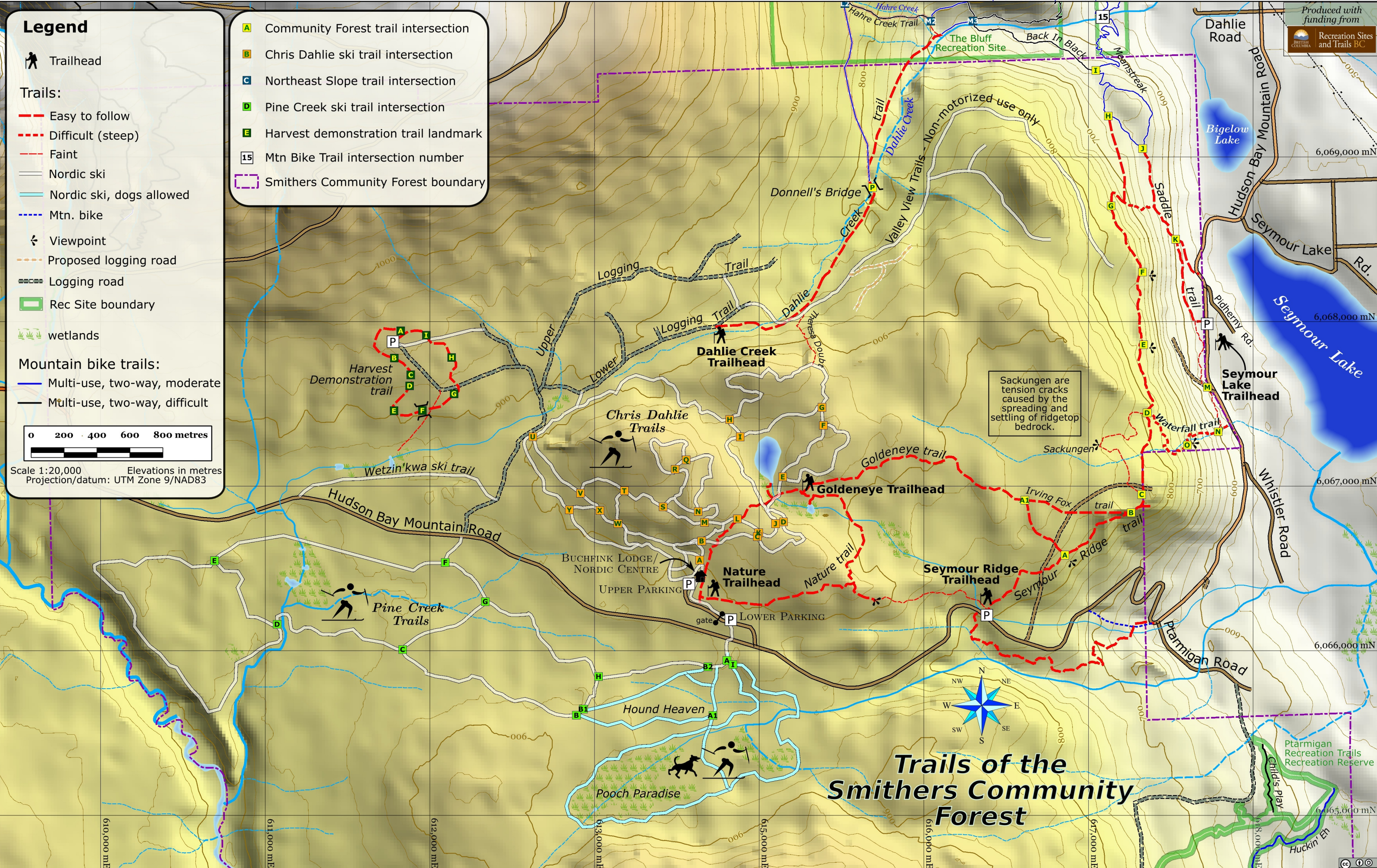


Legend

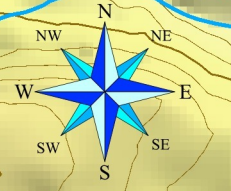
- Trailhead
- Trails:**
 - Easy to follow
 - Difficult (steep)
 - Faint
 - Nordic ski
 - Nordic ski, dogs allowed
 - Mtn. bike
 - Viewpoint
 - Proposed logging road
 - Logging road
 - Rec Site boundary
 - wetlands
- Mountain bike trails:**
 - Multi-use, two-way, moderate
 - Multi-use, two-way, difficult

- Community Forest trail intersection
- Chris Dahlie ski trail intersection
- Northeast Slope trail intersection
- Pine Creek ski trail intersection
- Harvest demonstration trail landmark
- Mtn Bike Trail intersection number
- Smithers Community Forest boundary

Scale 1:20,000 Elevations in metres
Projection/datum: UTM Zone 9/NAD83



Sackungen are tension cracks caused by the spreading and settling of ridgetop bedrock.



Trails of the Smithers Community Forest