

Legend

Trailhead

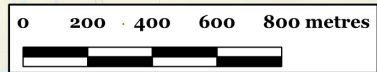
Trails:

- Easy to follow
- Difficult (steep)
- Faint
- Nordic ski
- Nordic ski, dogs allowed
- Mtn. bike
- Viewpoint
- Proposed logging road
- Logging road
- Rec Site boundary

wetlands

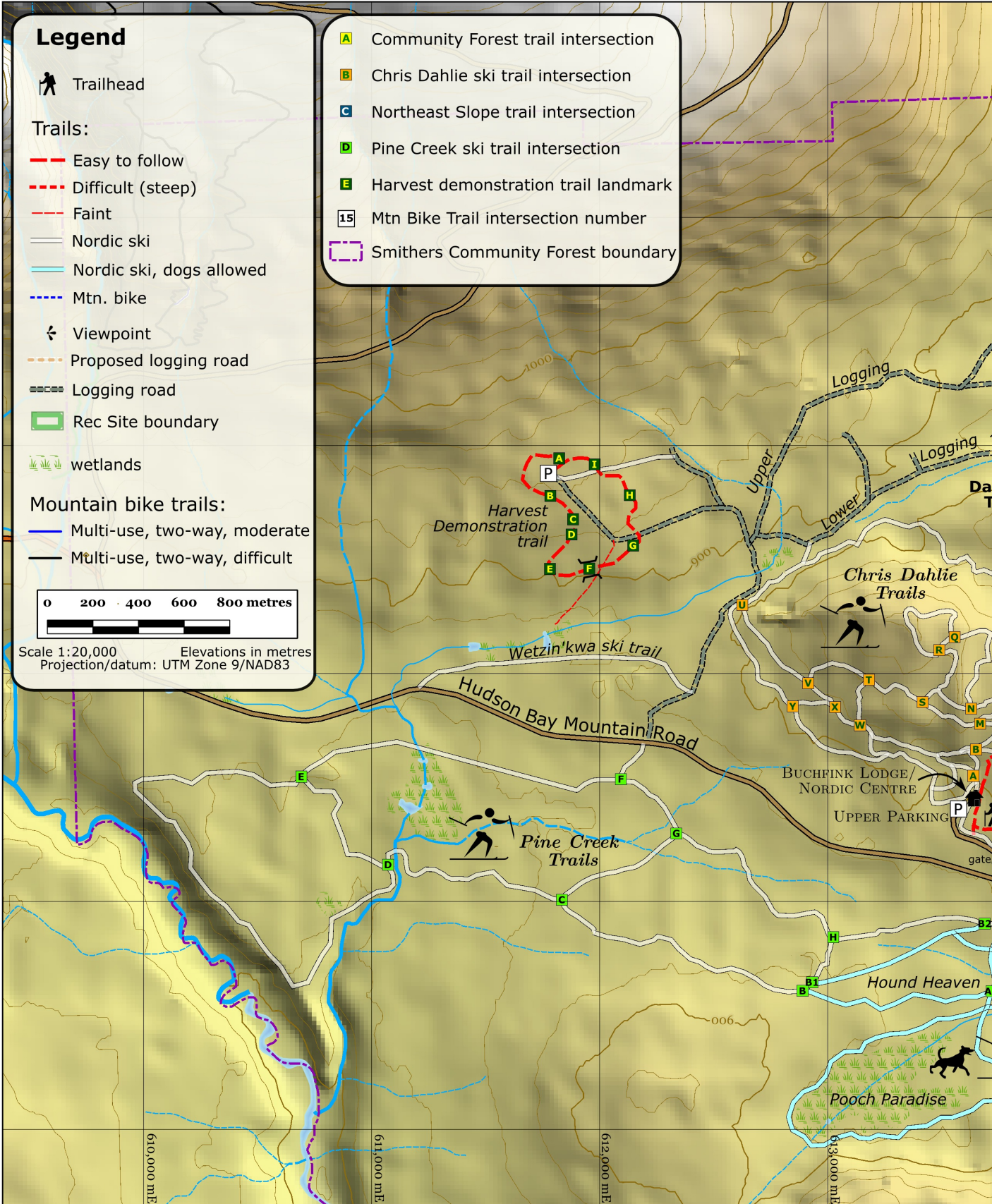
Mountain bike trails:

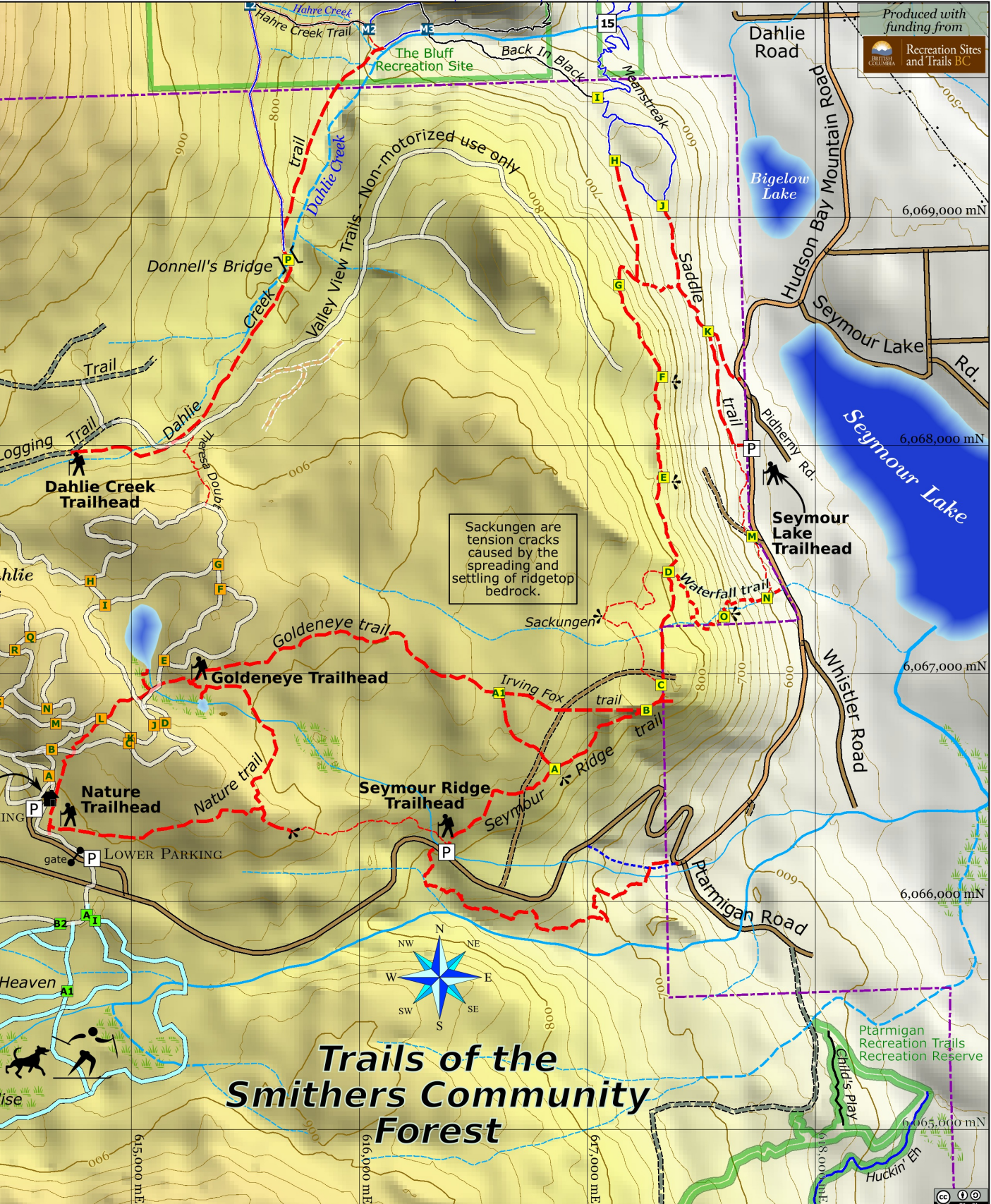
- Multi-use, two-way, moderate
- Multi-use, two-way, difficult



Scale 1:20,000 Elevations in metres
Projection/datum: UTM Zone 9/NAD83

- Community Forest trail intersection
- Chris Dahlie ski trail intersection
- Northeast Slope trail intersection
- Pine Creek ski trail intersection
- Harvest demonstration trail landmark
- Mtn Bike Trail intersection number
- Smithers Community Forest boundary





Trails of the Smithers Community Forest